

# Children & Young People's Overview & Scrutiny Committee Meeting

24th September 2008



# Aims of this Presentation

1. Academy Development – Key Messages
2. To outline what an Academy is
3. Pupil Arrangements
4. The Academy in the community
5. The Academy twin track process
6. The Academy time line
7. The Governance arrangements
8. Visual impressions of the Academy

# Falmer Academy – Key Messages

- **Stability** – No disruption for pupils and parents
- **Progression** – Improvements in line with Falmer High School's record
- **Continuity** – Teachers, staff and specialists will be protected under TUPE arrangements and given additional training and development prior to the Academy opening

# Falmer Academy – Key Messages

- **Safety** – For pupils and staff during the build through detailed agreements with the builders on the timing, fencing and construction arrangements

# What is an Academy?

- Academies are independent schools funded by the Government. They are bound by law to act in the interests of the Academy's pupils and local community
- An Academy is a new type of secondary school designed to meet the needs of young people in the 21<sup>st</sup> Century
- Academies are aimed at raising the achievements of all students to a level that will rival those of the best schools

# What is an Academy?

- Academies have a sponsor and are run by a Charitable Trust with a board of governors. The Falmer Academy sponsor is Rod Aldridge, not a company or a faith based organisation. Sponsors cannot make a profit from their involvement in an Academy
- Academies are all ability schools which are free of charge

# What is an Academy?



- Academies are at the heart of their community and encourage use of the facilities by local community groups
- Academies are subject to Ofsted inspections just like other State schools



# What is an Academy?

- The Academy will offer pupils greater opportunities for learning and improved results
- Falmer High School has been improving over the years and the Academy will accelerate that improvement
- The Academy will provide a brand new purpose built modern school building





# What is an Academy?

- The Academy will have a culture and ethos where all 900 pupils can excel and achieve their very best
- The Academy will provide opportunities and experiences that will unlock the talents and potential of every pupil so that they can experience success
- The Falmer Academy will have a sixth form for up to 250 pupils



# What is an Academy?

- The Academy must provide a broad curriculum including English Maths Science and ICT but will have specialities in Entrepreneurship and Sport with a strong focus on Science across the curriculum
- Entrepreneurship prepares pupils for employment with both large and small businesses, their own businesses or as the employers of other people

# Pupil Arrangements



- We plan to start building the new school in Summer 2009 and open in a mixture of new and existing buildings in September 2010
- The old North block would be demolished and the new building completed by 2011



# Pupil Arrangements

- The Academy will use the same admissions arrangements as Falmer High School so if you have a child who would have been offered a place at Falmer High School they will be able to start at the new Academy
- No pupils will have to move to other schools whilst the Academy is being built
- Pupils with special needs will be supported by a dedicated team and have excellent new facilities

# What will the Academy do for the local community?

- Before the Academy opens, we will set up a Parents' Council so that they can have an input into new arrangements such as the length of the school day, after school clubs and school uniform
- The Academy will encourage businesses into the school and will house a number of small businesses so that pupils can get direct work experience

# What will the Academy do for the local community?

- The Academy will offer its accommodation to community groups at subsidised rates
- The Academy will provide breakfast, lunchtime and other school clubs, Saturday clubs, school holiday programmes and will be open at the weekends

# What will the Academy do for the local community?

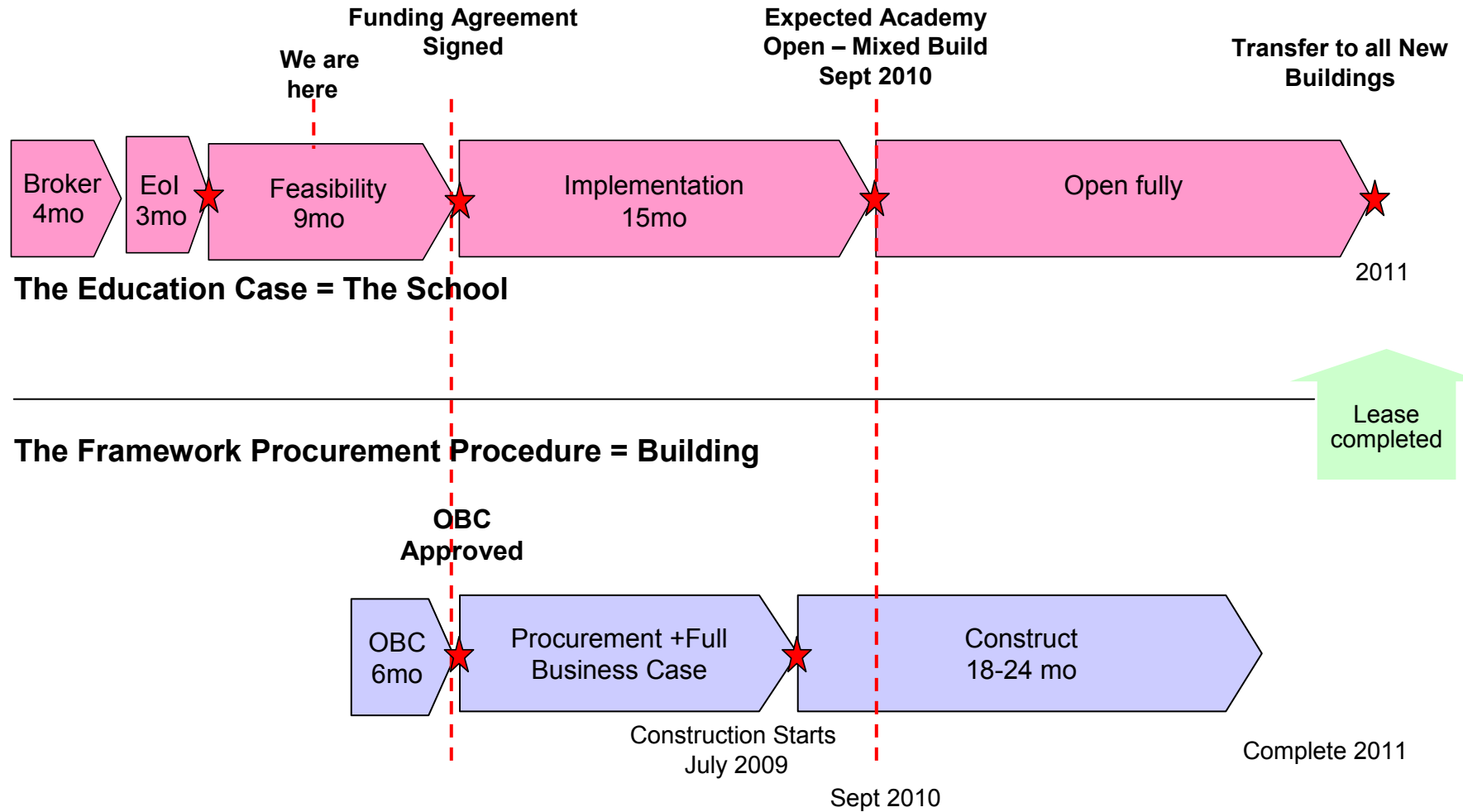
- The Academy will encourage local people and community groups to use the new facilities such as the sports hall
- Those groups that currently use the school site, eg, for football matches, will be able to continue to use the playing fields and the new changing facilities

# The Twin Track Development Process

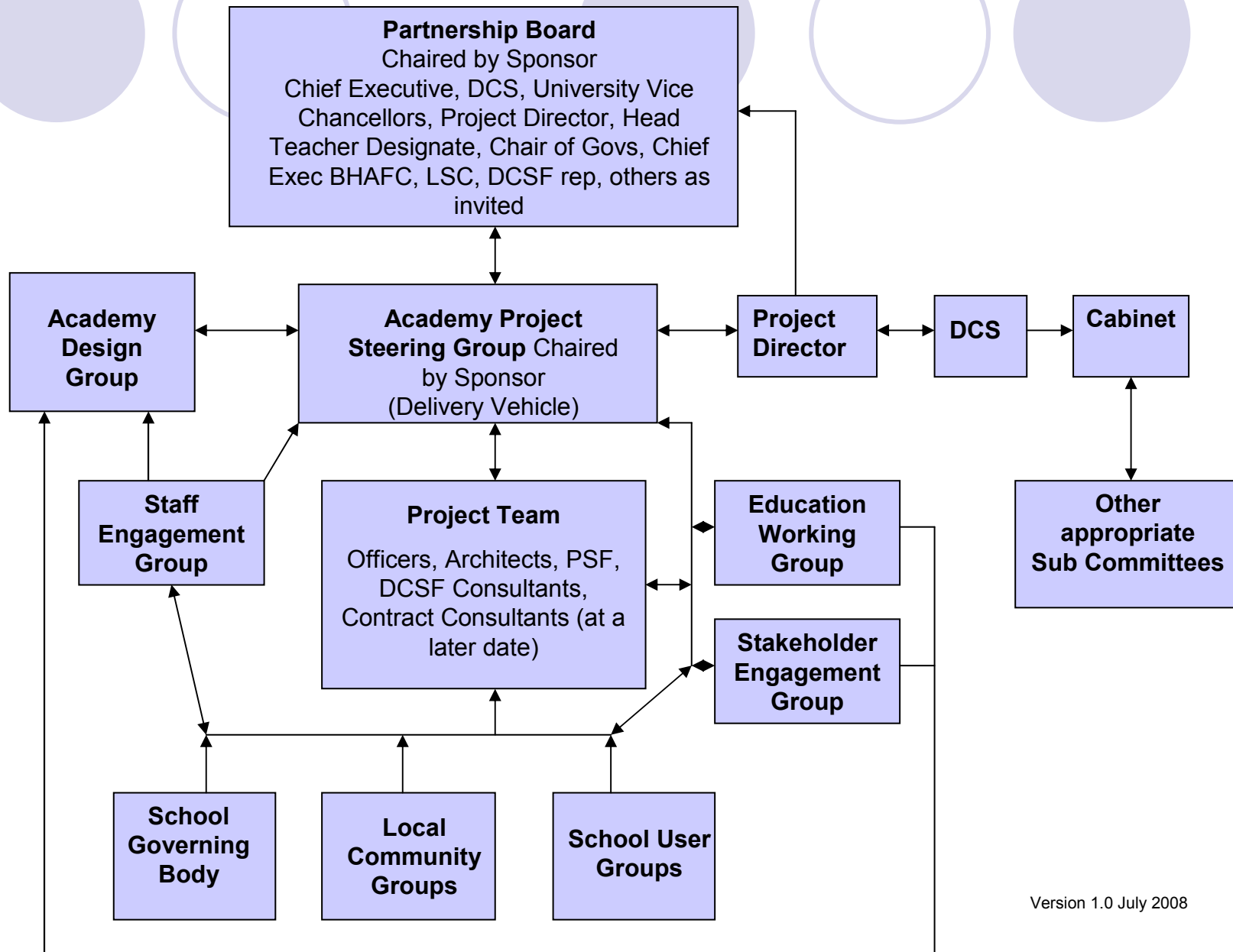
- The Academy's development follows two tracks which go on separately but come together at specific points in the process.
- The two tracks are:
  - The Education Case = The School
  - The National Framework Procurement Procedure = The Building

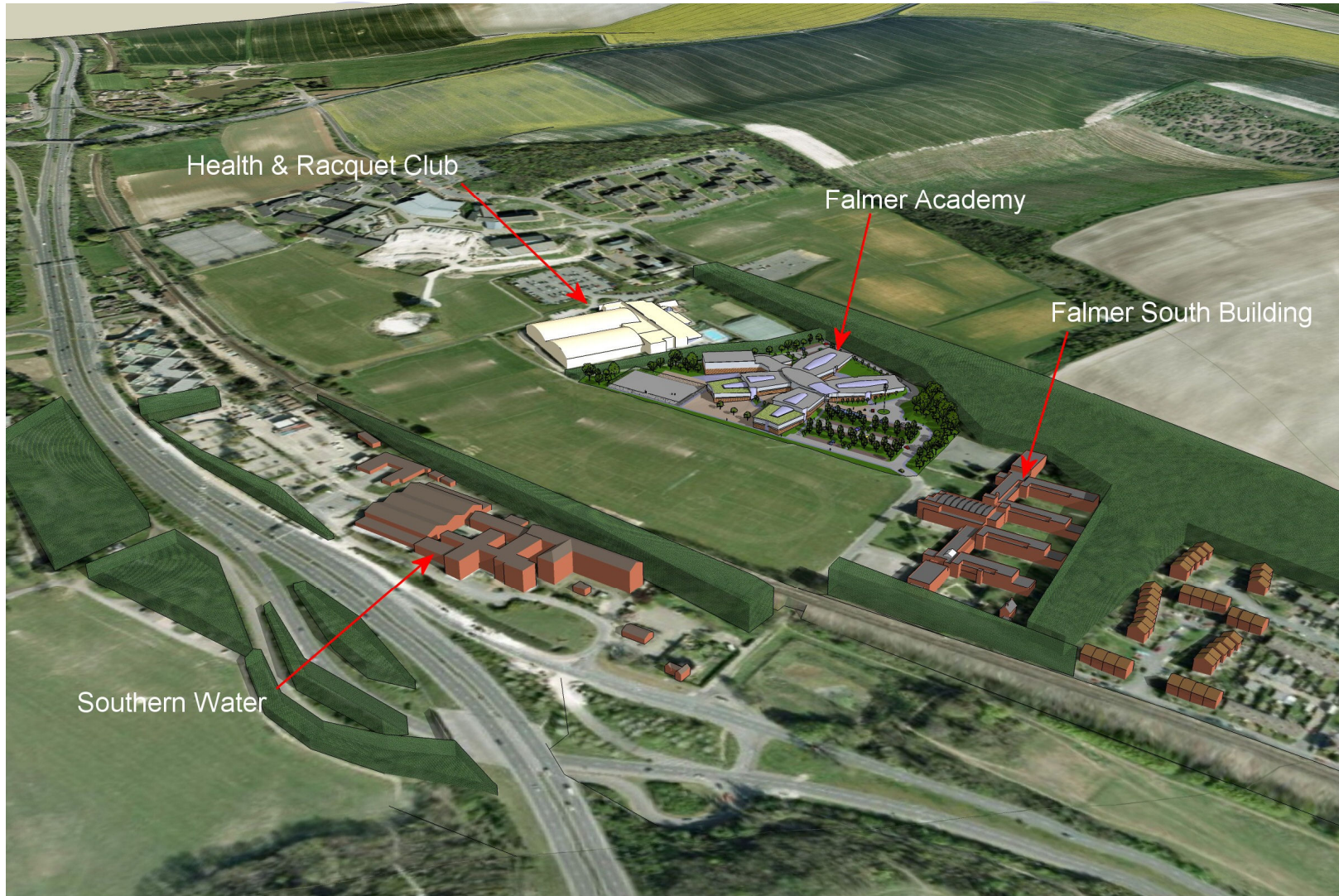


# Delivery Timeline



# Governance and Management Structure

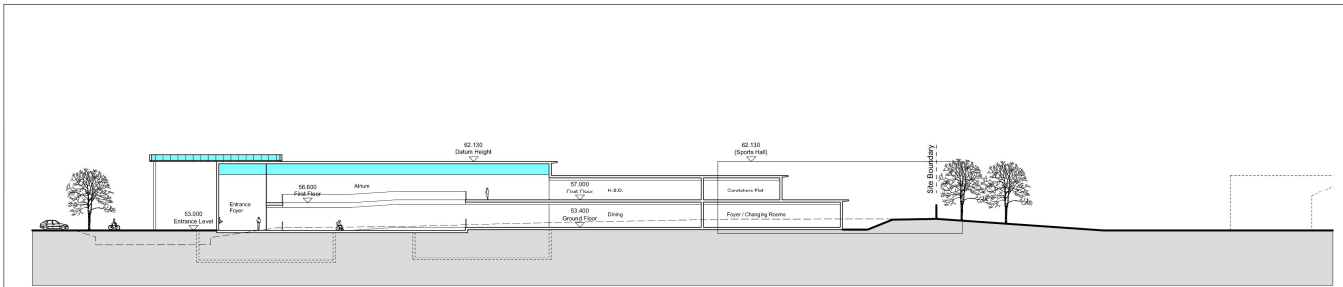




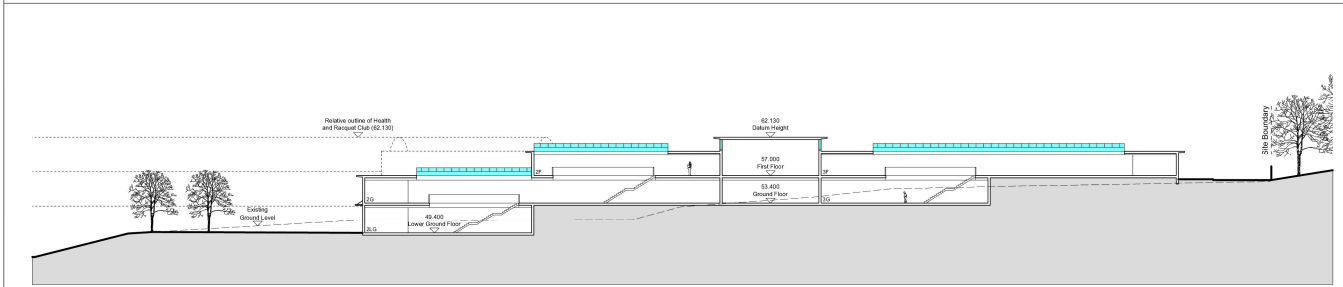
ED193-036 Falmer Academy - Proposed Aerial View from West



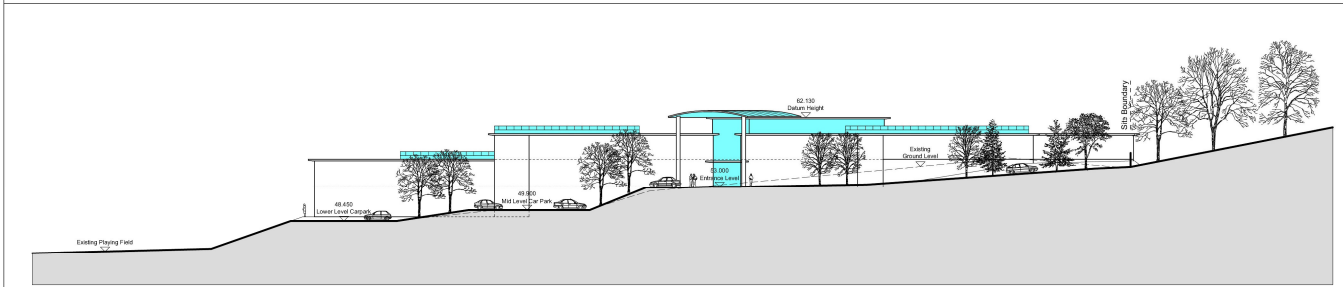
Falmer Academy



SECTION A-A



SECTION B-B



SECTION C-C

A. 12126 Outline planning issue.  
 10/11/2008 12/20/2008

Drawing Status  
**OUTLINE PLANNING**

Brighton & Hove  
 City Council  
 BRIGHTON & HOVE CITY COUNCIL  
 PROPERTY DESIGN  
 10000 HOUSE, GRAND AVENUE,  
 HOVE, BRIGHTON, BN1 3JL  
 Telephone: 01273 262000 Fax No: 01273 264467

Project  
**Falmer Academy**

Title  
**Proposed Sections**

Drawn By	Checked By	Date
MS	MM	Feb 2008

Project No.	Scale
ED 193	1:500 @ A1

Drawing No.	Revision
004	A



Falmer Academy





# Falmer Academy

